

# How to setup a Printer to Print from Solaris to MegaRIP and BlackMagic

Orginated 26 April 2000

## Introduction

This document takes you through the steps to setup a printer to print from a solaris machine to a MegaRIP or BlackMagic. This was setup and tested on Sun box running Solaris 8 to a BlackMagic on an NT box. It is assumed that the user has root privileges on the Solaris box i.e. Administrator rights, and is running a windowing system. The administrator should have reasonable knowledge of the Solaris OS and knowledge of the VI editor. It is further assumed that the BlackMagic or MegaRIP is installed and configured as per the manual.

## Conventions

When doing anything on the Solaris Box it will be referred to as the Sun box.. Prompts from the command line on the Sun as a user will be shown with a '\$' and as root with a '#'. Anything after these prompts will commands you need to enter and shown in *Italics*. Output from the terminal is displayed in **bold**.

As configuration for the BlackMagic and MegaRIP are the same, from here on MegaRIP will be referred to as

## Overview

The procedure for setting up a printer on Solaris involves adding a new printer on the Sun box and editing a file to use a Solaris print driver supplied on the MegaRIP or BlackMagic CD. The driver must then be copied to a suitable location on the Sun and BlackMagic or MegaRIP configured to publish a printer port for the Sun.

## Method

### Creating a printer on the Sun

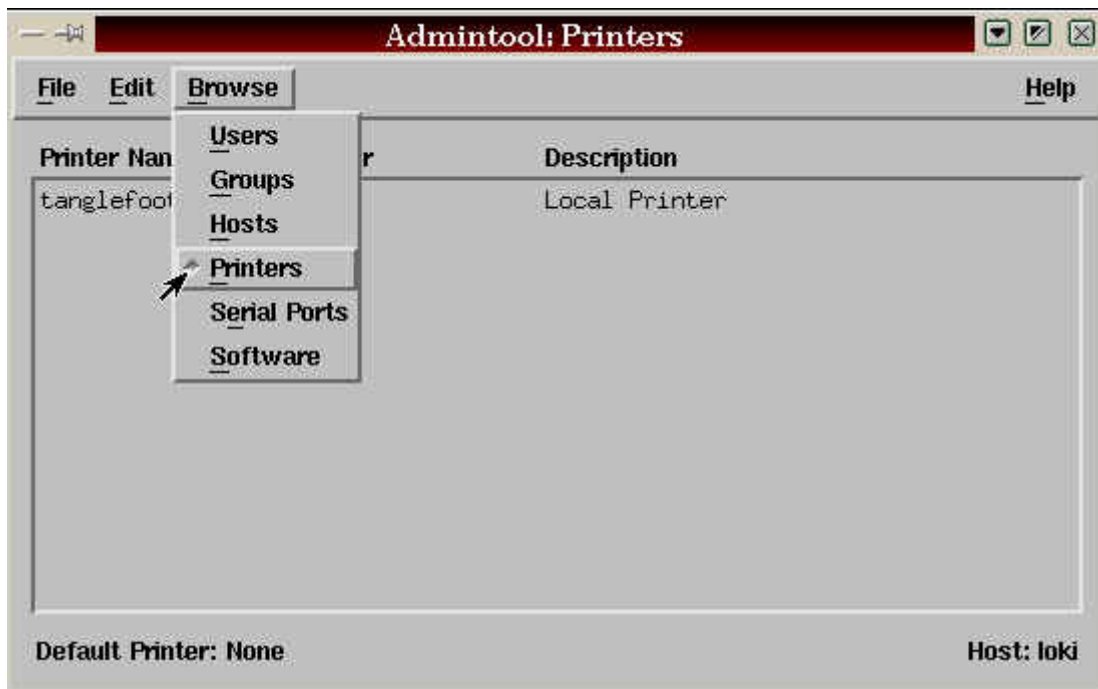
On the Sun, open a terminal window and become root user.

```
hostname$ su  
password: <Enter password>
```

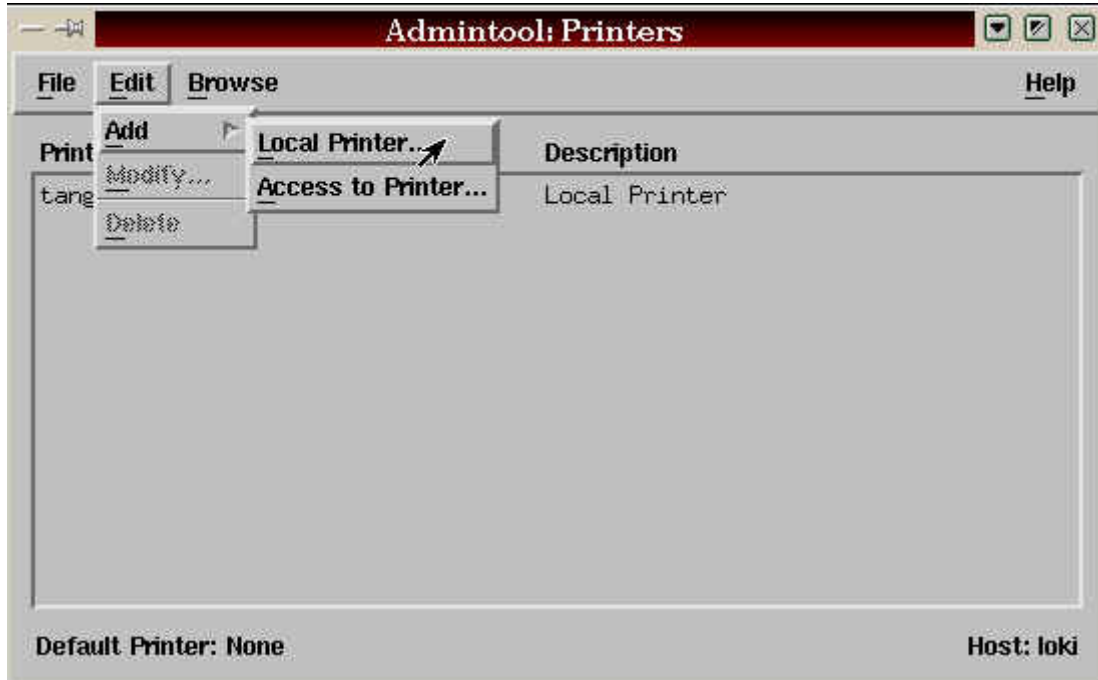
After the prompt you need to start the admintool.

```
hostname # /usr/bin/admintool <enter>
```

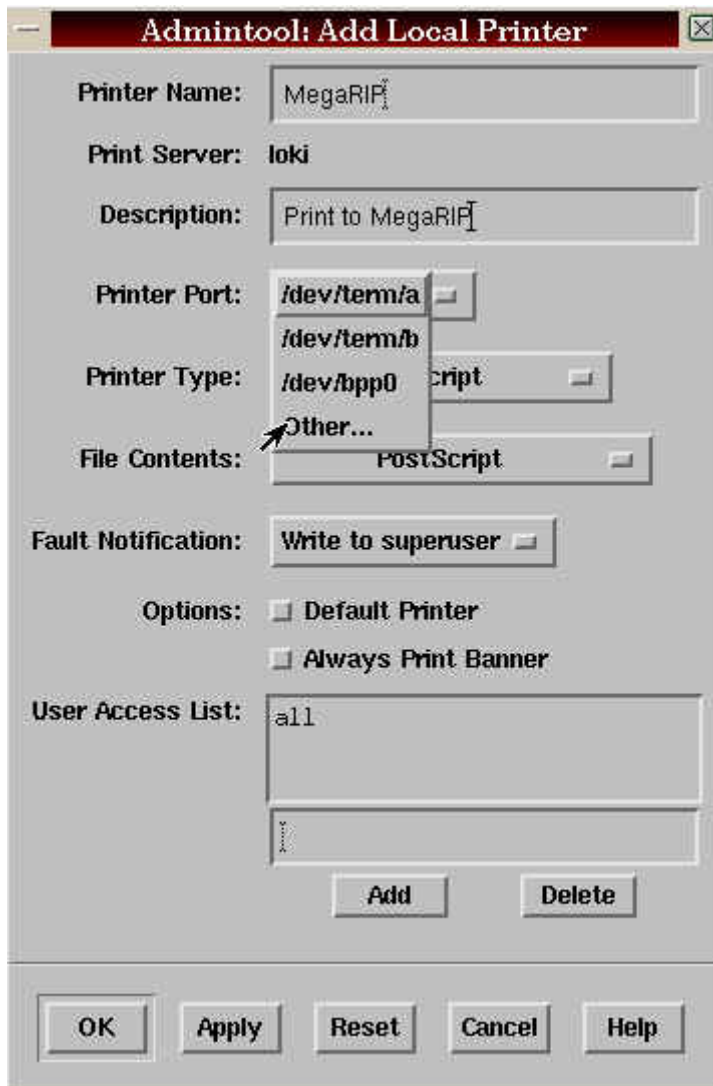
The admintool configuration window will display. Select browse printers to show any printers that are currently configured.



Then select add – local printer, from the Edit menu



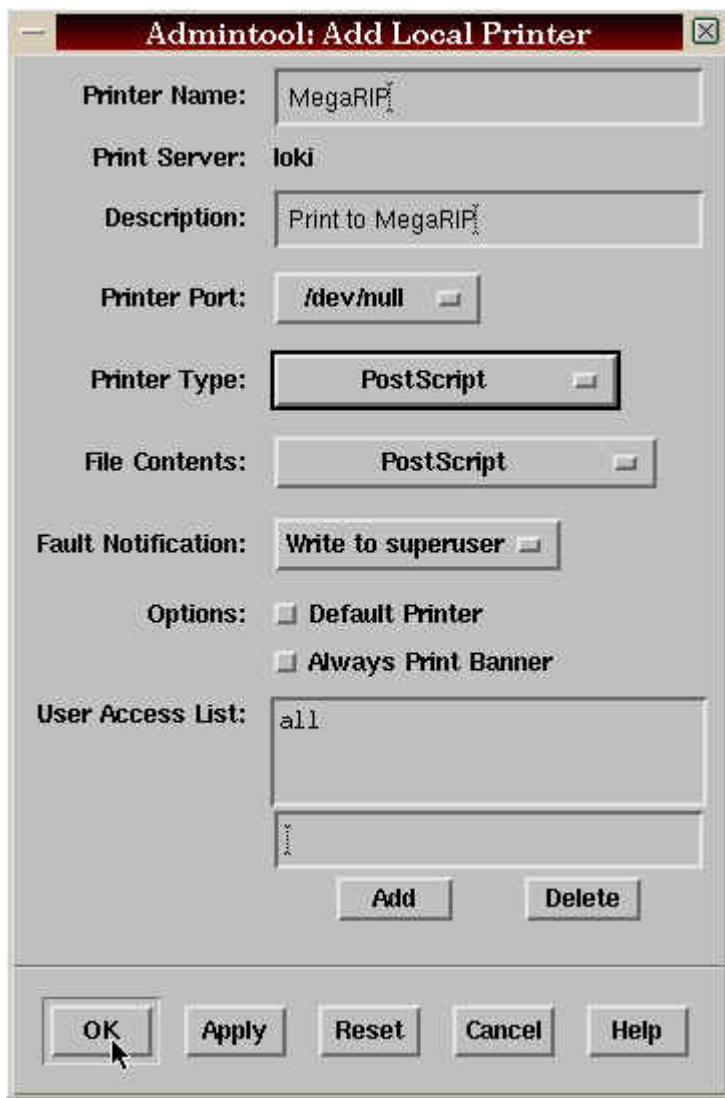
The 'add local printer' window will be displayed. Follow the steps to configure a new printer. When it comes to selecting the port, you need to select /dev/null. If this does not exist, select 'other' as below.



Enter the port name of /dev/null



Click OK and complete the rest of the configuration. You should have a configuration that looks like the one below.



When you are complete, select OK and your new printer will be added.

#### Adding the driver

Then, from the MegaRIP CD, navigate to the drivers/unix/solaris directory and copy the file MegaRIP1 to a convenient location on the Sun. A common place one that we will use here is /usr/local/bin

```
hostname # cd /cdrom/megarip/drivers/unix/solaris <enter>
```

```
hostname # cp MegaRIP1 /usr/local/bin <enter>
```

### Editing the printer file

Then, in a terminal window type

```
hostname # cd /etc/lp/interfaces
```

You should have a file called MegaRIP which is the name of the printer that we created above. We now need to edit this file as shown below. Type

```
hostname # vi MegaRIP
```

You will then see file in edit mode. You need to search for a line of text. Below will show you how to search and what to put where.

While in the edit mode of the file, type the following

```
/badfile <enter>
```

This should jump down the file and show the following

```
badfileyet=
i=1
while [ $i -le $copies ]
do
  for file in ${files}
  do
    if [ -r "${file}" ]
    then
      #####
      #
      # Here's where we set up the $LPTELL program to
      # capture fault messages, and...
      #
      # Here's where we print the file.
```

Then use the arrow keys to scroll down until the cursor is on the word 'then'. Then press *o* and the line below the cursor will open. Use the tab key to move just beyond the word 'then' and type the following.

```
/usr/local/bin/MegaRIP1 "${file}"
```

press the escape key <Esc> and then type

```
:wq <enter>
```

The file should look like the one below where you inserted the line. If you make a mistake, press <Esc> :q!  
and start the editing again.

```
badfileyet=  
i=1  
while [ $i -le $copies ]  
do  
    for file in ${files}  
    do  
        if [ -r "${file}" ]  
        then  
            /usr/local/bin/MegaRIP1 "${file}"  
            #####  
            #  
            # Here's where we set up the $LPTELL program to  
            # capture fault messages, and...  
            #  
            # Here's where we print the file.
```

This completes the configuration on the Sun. If further printers are added then the other files from the CD need to be copied into the same location as MegaRIP2 etc and the entry in the /etc/lp/interfaces/"printer name" file needs to show the change in name also.

## Configuring the MegaRIP

On the MegaRIP select the control panel and go to pagesetups. Select the page setup that you wish configure and select the publish as. Enable TCP Port and enter port 2000 (For MegaRIP2 enter 2001 etc). Then save the pagesetup. This is then ready to receive print jobs from the Sun. The pagesetup should look like this.

