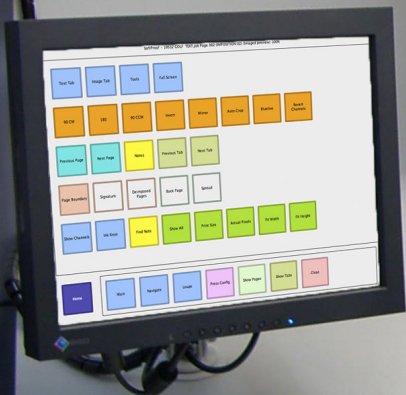




precision softproofing



PALETTEKAART

ORDERNR. :
TITEL :

VELNR. : 5
OPLAGE : 28.400
NETTO :
BRUTO :

vel
vel

TOEGEGEN
499

WINKELWEG
WINKELWEG

WINKELWEG
WINKELWEG

WINKELWEG
WINKELWEG

WINKELWEG
WINKELWEG

WINKELWEG
WINKELWEG

WINKELWEG
WINKELWEG

WINKELWEG
WINKELWEG

WINKELWEG
WINKELWEG

WINKELWEG
WINKELWEG

WINKELWEG
WINKELWEG

WINKELWEG
WINKELWEG

Veripress is an on-press softproofing system representing the next generation in digital proofing. Built around an **advanced colour management system with a touch screen interface**, Veripress uses platesetter RIP data to produce verified colour-matched proofs on screen, at the touch of a button.



In an era where the productivity demands of high volume press environments mean less time available for hardcopy proofs, **softproofing is the logical solution.**

Fast, cost efficient and easy to use, Veripress ensures proofs are ready on the press as soon as the plates arrive.

The Veripress range has integrated proofing solutions suited to any production and press workflow. Press versions can read the native file format, directory structure, plate assembly and imposition data of **all major manufacturer proprietary RIPs**. All packages accept file input across the following formats: TIFF, JPEG, PNG, Scitex CT, Serendipity Blackmagic Image.

Veripress Pro

The complete softproofing solution for the colour-savvy press room. **Designed for the challenges of press and publishing environments**, Veripress Pro **accepts all supported file formats** and is fully optioned to provide streamlined, print-free proofing for a vast array of Bitmap and Postscript RIPs. Touch screen control, press console synchronisation and publication planning file support maximise production output and keep presses rolling.



Veripress Lite

Veripress for press rooms requiring **precision softproofs for imagesetter and platesetter RIPs**. Integrated RDT (Real Dot Technology) displays softproofs with original halftone screening. Press ICC matching with press and platesetter dotgain compensation combine with print media simulation to ensure colour accuracy.

Veripress Lite has all of the features of Pro, for non-postscript workflows.

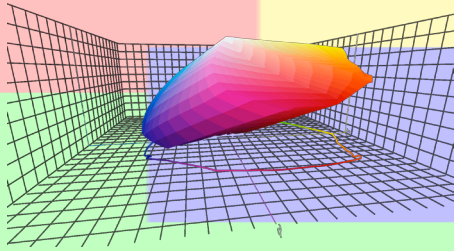
Veripress Bureau

Perfect for pre-press design and advertising studios needing to **proof postscript work for publication**. Veripress Bureau has all the functionality of Pro, for a PDF-only environment.

Veripress Remote

Veripress Remote allows for the **softproofing of jobs sent from a Veripress server anywhere in the world**. Serendipity's proprietary Blackmagic Image format maintains total data integrity to ensure offsite locations view identical colour-matched proofs.

Veripress - Precision softproofing has landed.



CMS and Multicolour Support

Veripress is built on a full **16-bit** engine. The colour management system is **ICC v4.2 compliant** and capable of reproducing the gamut of virtually any print process onscreen.

Full **multicolour support** allows accurate proofing of any multicolour printing process - be it hexachrome, heptachrome or a custom process.

Spot Colour Handling

Support for **unlimited spot colours** means precise proofing for any job, regardless of the complexity.

Spot colours can be easily imported or created, assigned a paint mode (overprint, knockout, primer, transparent, opaque), a tint level within each mode and a unique dot gain curve.

Special colours are handled in an L*a*b* colour space to maximise accuracy. **Advanced spot merging** algorithms simulate how each ink will react with other spot and process press inks, making true spot colour proofing a reality.

Name	Remapped	Mode	Tint	Dotgain	Original
Crayola	Process Cyan	Overprint	100%		Process Cyan
Crayola	Process Magenta	Overprint	100%		Process Magenta
Crayola	Process Yellow	Overprint	100%		Process Yellow
Crayola	Process Black	Overprint	100%		Process Black
Crayola	DPlatoCUT	Opaque 83%	77%		DYE CUT
Crayola	Pantone 2736 C	Overprint	100%		SPECIALPURPLE
Crayola	Spektacolor Yellow	Overprint	100%		SPECIALYELL



Bookfilter

Using Bookfilter, operators are able to **proof large multi-section or multi-edition publications**, newspapers or magazines at the touch of a button.

Pages used in multiple publications need only be **RIPPed once for proofing**. Veripress **reads** the same **planning files** used on the press to assemble pages in the correct sequence for each publication to be proofed.

Secure Account Management

Veripress allows administrators to **create group and user login accounts** tailored to specific roles in the work environment. Accounts are used as a filter to deliver only the **information relevant to each user**; grant them access to functions and applications; and editing privileges when appropriate. The system enables remote users to login securely and can be configured to **notify users of system critical events via email**.

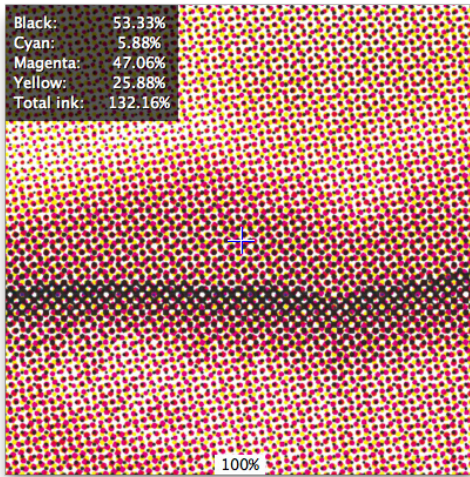
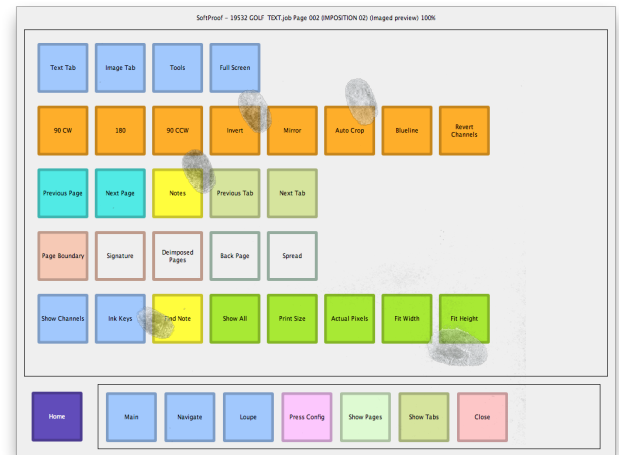


Touch Console

Veripress includes out-of-the-box support for touch screens - the press room is no place for a mouse or keyboard.

The Veripress **touch console interface** features hierarchical **one-touch access** to all proofing and navigation functions. A visual pan interface displays a thumbnail of the currently loaded proof. Navigation to a part of the page is as simple as a touch or drag.

The **touch console can be customised** so press operators need only see buttons for the functions used in the press room. The buttons can be re-labelled to use local terminology.



Loupe

The virtual Loupe tool allows for the magnification of sections of page and provides **accurate readings of dot percentages**.

A touch-and-drag interface moves the Loupe around the page and **allows the loupe size and magnification to be adjusted** while examining halftone dots and fine text. Channel controls cycle the view within the Loupe through the area's individual ink channels.

A **dynamic heads-up-display** shows the ink dot percentages at a pointed centred crosshair or within an area average percentage box configured to the line screen of plates.

Publications

Veripress can load and **proof entire publications** comprised of single pages or de-imposed from multi-page press sheets.

Page navigator panels on the main proofing screen and the touch console **show available, missing or duplicate pages and page pairs** when viewing spreads. The Show Pages touch interface provides **one-touch access to any page**.

Spreads

Publications can be viewed as **page spreads, generated on-the-fly**, without the need for reprocessing.

Pages are displayed side by side to identify problems or bleed issues with full-page spread advertisements or images.



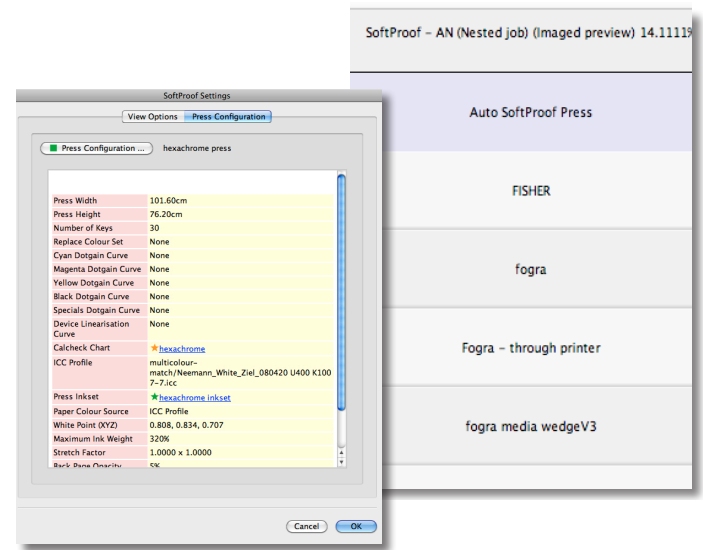
Press Configurations

Created to **precisely emulate the properties of the press and substrate on screen**, press configurations are an integral part of the Veripress softproofing solution.

Users define the operating gamut of the press via a Match ICC profile. Dot gain curves can be added to **compensate for the dot gain of each process CMYK ink and spot colour**, as well as that of the platesetter device. Replacement colour sets can be used for printing processes with non-standard ink setups. The printable sheet area of the press can be entered, along with its number of ink keys.

Press configurations can **define the white point of the paper** being used, entered manually, based on the match ICC profile, or even by measuring the substrate with a supported Spectrophotometer. The paper's **show-through properties can be defined**, including a dot gain curve for the back page; a maximum ink weight set; and horizontal or vertical stretch factor.

Press configs can be switched instantly via the touch console to view a job as it would look when printed by a different press, or on another paper type.



Press Agent

The Press Agent application allows Veripress to be **directly connected to a press console through a network port**. When the press operator turns/loads a page on the press console, using a button or by flipping a camera recognised page, Veripress **automatically loads the correct page** for softproofing.

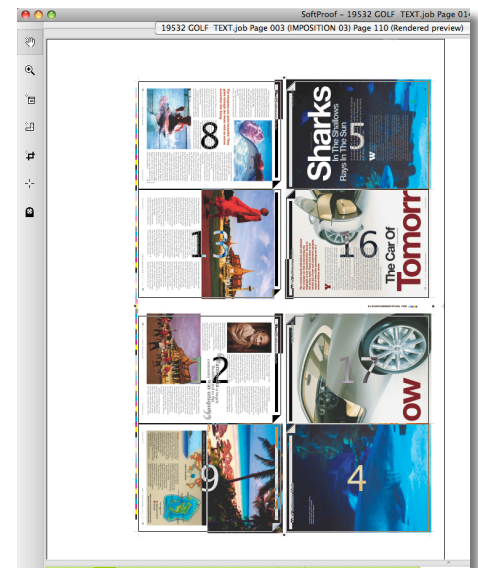
De-Imposition

Veripress includes a built-in de-imposition engine, allowing **imposed press files** to be virtually cut and **proofed at published size**.

Signature groups can be custom built or imported directly from jobs in a number of industry formats such as Dynastrip, Preps and JDF. The user interface features the ability to multi-select individual signatures within a group, allowing mass-changes to parameters such as plate offset or page size when working with large publications.

Imposed press sheets can be submitted for proofing with a signature attached.

Press operators have the option of **viewing an overlaid signature** when proofing the sheet or **de-imposing press sheets on-the-fly** to proof individual pages without the need for reprocessing the original. This functionality saves on both disk storage space and operator search times.





Channel Surfing

Show Channels enables a press operator to **quickly toggle ink channels** to get an accurate representation of the proof at various print stages, or is used in concert with the **digital blue line function** to check for traps and overprints.

Blue Line replaces all process colours with varying shades of blue, enabling traps to be spotted with ease.



Remote Proofing

Veripress has the ability to **push proofs to remote locations, anywhere in the world**. Proofs are sent via FTP or Secure FTP to a Veripress Remote server in the same Serendipity Blackmagic Image format used for the softproofs at the source location.

This streamlined, proprietary format maintains **complete data integrity** - preserving process and special spot colour L*a*b* values and transparency features - enabling remote users with the same calibrated Veripress configuration to view a **certified, identical proof**.

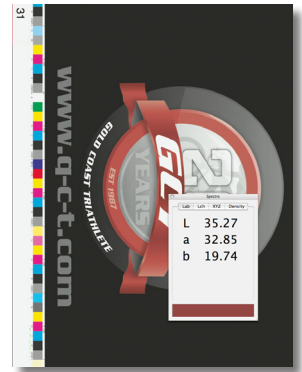


Spectro Tool

Veripress allows **precise comparison of softproof and press sheet colours**.

Operators can use a supported Spectrophotometer to take accurate L*a*b*, Lch, XYZ and approximate density values from a press sheet.

An onscreen Spectro Tool can be used to measure the corresponding area on the softproof and display the delta E value.



Back Page

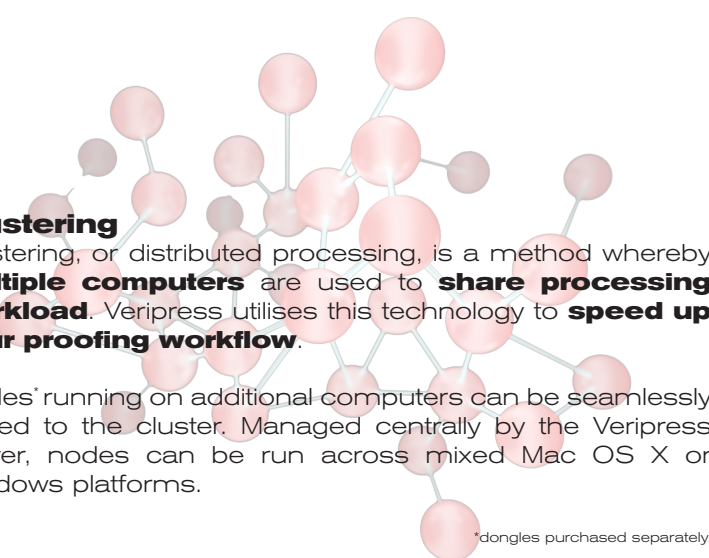
The back page function allows Veripress to virtually back consecutive publication pages onto each other.

User-configured paper white point, opacity and back page dot gain are used to accurately **simulate the effects of show-through** on the current page.

Clustering

Clustering, or distributed processing, is a method whereby **multiple computers** are used to **share processing workload**. Veripress utilises this technology to **speed up your proofing workflow**.

Nodes' running on additional computers can be seamlessly added to the cluster. Managed centrally by the Veripress server, nodes can be run across mixed Mac OS X or Windows platforms.



*dongles purchased separately.

Serendipity
software